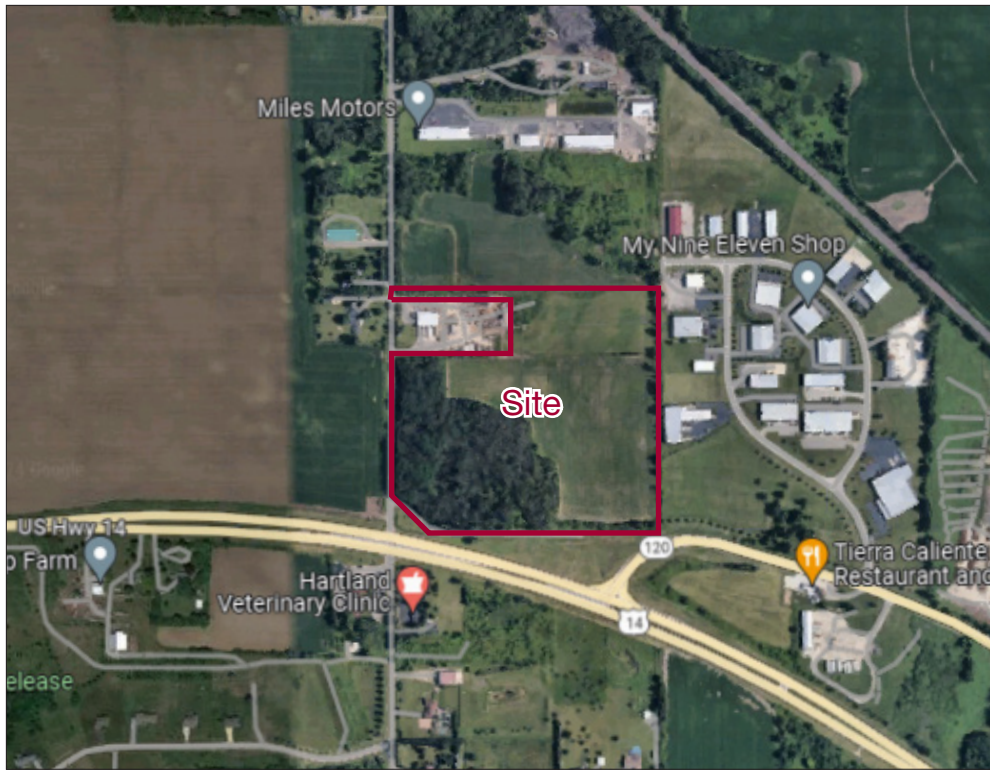


Route 14 & Rose Farm Rd., Woodstock, IL

\$1,250,000



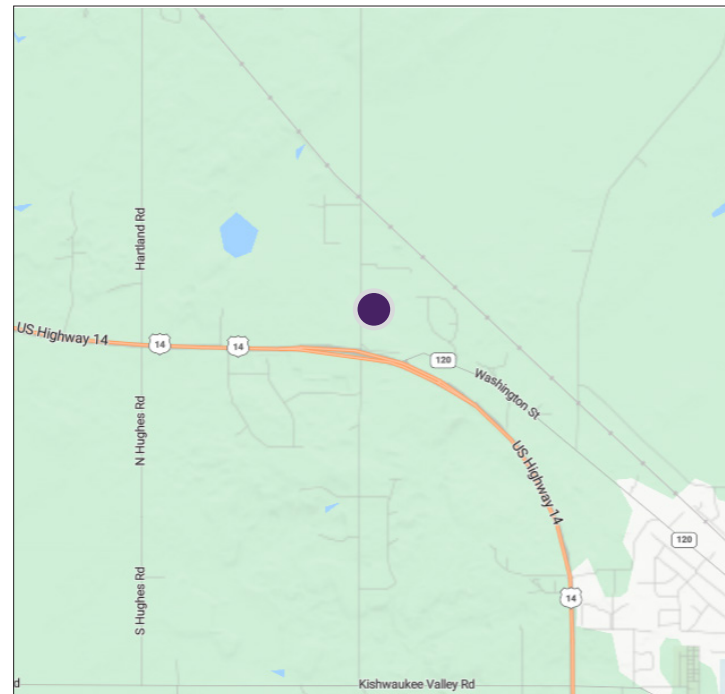
Property Highlights

- 24-acre industrial land site
- Situated at the intersection of Route 14, one of the major commercial arteries in the area and Rose Farm Road
- Potential development opportunities include industrial, retail, office and other limited use
- Low McHenry real estate taxes
- Location benefits from a strong labor base
- Adjacent to Trakk Industrial Park
- Attractions nearby: Jewel-Osco, Walgreens, industrial, service and recreational industry businesses
- Daily traffic count: 1,063 vehicles
- Zoning: M-1 and B-5
- Taxes (2022): \$732.04

Property Overview

Just re-listed for sale is a 24-acre development site that was previously marketed with an asking price of \$3,900,000. This expansive site is comprised of 2 parcels, with both commercial and industrial zoning. Situated at the highly visible intersection of Route 14 and Rose Farm Road, the parcel has easy accessibility, conveniently located with close to Woodstock's downtown and neighboring cities. Both electric and gas are located near the site, but water and sewer will need to be connected. Excellent opportunity for a developer or investor. Businesses in the area include Walgreens, Jewel-Osco and several industrial businesses and recreational facilities.

Woodstock is a city in the far northwest suburbs of Chicago in the heart of McHenry County. US Hwy. 14 and Route 120 are two of the major routes serving Woodstock and the surrounding area.



DEMOGRAPHICS	1 Mile	3 Mile	5 Mile
Population	461	15,632	28,519
Households	161	5,558	10,376
Median Income	\$82,000	\$70,396	\$74,950

Susan B. Silver
Executive Director
(312) 338 - 3001
ssilver@mpirealestate.com

mpirealestate.com

All information provided herein is from sources deemed reliable. No representation is made as to the accuracy thereof and it is submitted subject to errors, omissions, changes, prior sale or lease or withdrawal without notice. Projections, opinions, assumptions and estimates are presented as examples only and may not represent actual performance. Consult tax and legal advisors to perform your own investigation. No commission will be paid to a broker that is representing themselves, their company, another broker or representative of their company, or a member of the broker's family. An affidavit will be required to certify that the principal is not acting as a broker in any manner.