

5778 N. Elston Ave., Chicago, IL

\$364,999



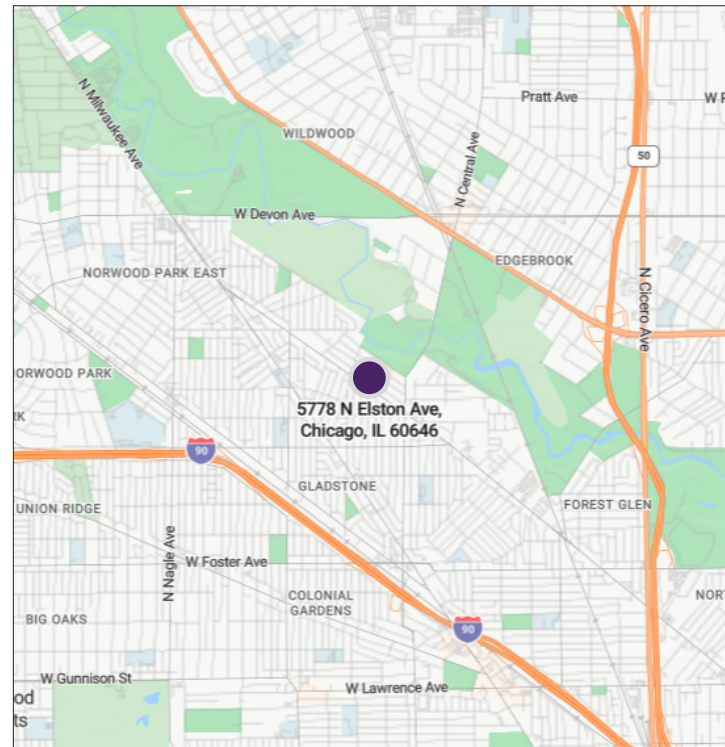
Property Highlights

- 2,900 SF office or live/work unit
- Completely renovated space throughout with new kitchen, bathrooms, flooring and windows
- Updated epoxy oversized 2-car garage
- Perfect for a live/work space, unique residential unit or convert to office space with a special use permit
- Ample street parking available
- Great visibility on busy Elston Ave
- Nearby attractions: Edgebrook Golf Course, Billy Caldwell Golf Course, Chicago North Illinois Secretary of State, McDonald's, Walgreens, and Chicago's favorite Supadawg Drive-In
- Close to I-90 & I-94 expressways, Metra Rail, trains and bus lines
- Traffic count: 8,566 vehicles daily
- Zoning: RS-3
- Taxes (2021): \$12,163.56

Property Overview

A 2,900 square foot office or live/work property is available for sale. Uncover a multitude of opportunities with this adaptable two-story property! Currently configured as a three bedroom, two bathroom residential unit with a spacious two-car oversized garage, this property offers the perfect blend of comfort and functionality. The space has undergone a complete renovation, showcasing brand-new kitchen and bathrooms, tasteful flooring and upgraded windows, ensuring a modern and inviting ambiance throughout. Convenience is a key feature, as this property is strategically situated near I-90 and I-94 expressways, the MetraRail line, train and bus lines. Embrace seamless connectivity to the city's major transportation hubs and enjoy easy access to all the amenities the area has to offer.

Jefferson Park is a 2.4 square mile neighborhood on the north-west side of the city and home to more than 25,000 people. The area features several commercial corridors within including along Elston Ave. and Northwest Highway.



DEMOGRAPHICS	1 Mile	3 Mile	5 Mile
Population	22,325	229,843	763,986
Households	8,408	84,311	270,032
Median Income	\$93,284	\$85,276	\$76,803

Sean Wagner
Asset Management
(312) 338 - 3004
seanw@mpirealestate.com

mpirealestate.com

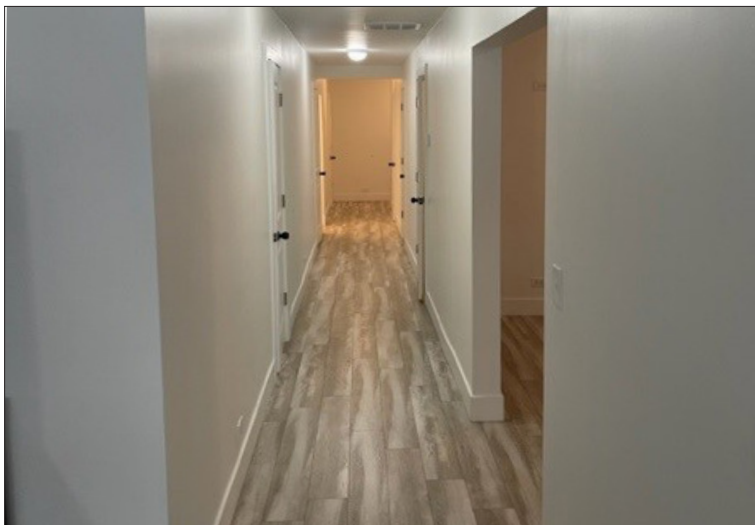
All information provided herein is from sources deemed reliable. No representation is made as to the accuracy thereof and it is submitted subject to errors, omissions, changes, prior sale or lease or withdrawal without notice. Projections, opinions, assumptions and estimates are presented as examples only and may not represent actual performance. Consult tax and legal advisors to perform your own investigation. No commission will be paid to a broker that is representing themselves, their company, another broker or representative of their company, or a member of the broker's family. An affidavit will be required to certify that the principal is not acting as a broker in any manner.

MILLENNIUM PROPERTIES R/E

Excellent Live/Work Investment in the Heart of Jefferson Park

5778 N. Elston Ave., Chicago, IL

\$364,999



Sean Wagner
Asset Management
(312) 338 - 3004
seanw@mpirealestate.com

mpirealestate.com

All information provided herein is from sources deemed reliable. No representation is made as to the accuracy thereof and it is submitted subject to errors, omissions, changes, prior sale or lease or withdrawal without notice. Projections, opinions, assumptions and estimates are presented as examples only and may not represent actual performance. Consult tax and legal advisors to perform your own investigation. No commission will be paid to a broker that is representing themselves, their company, another broker or representative of their company, or a member of the broker's family. An affidavit will be required to certify that the principal is not acting as a broker in any manner.