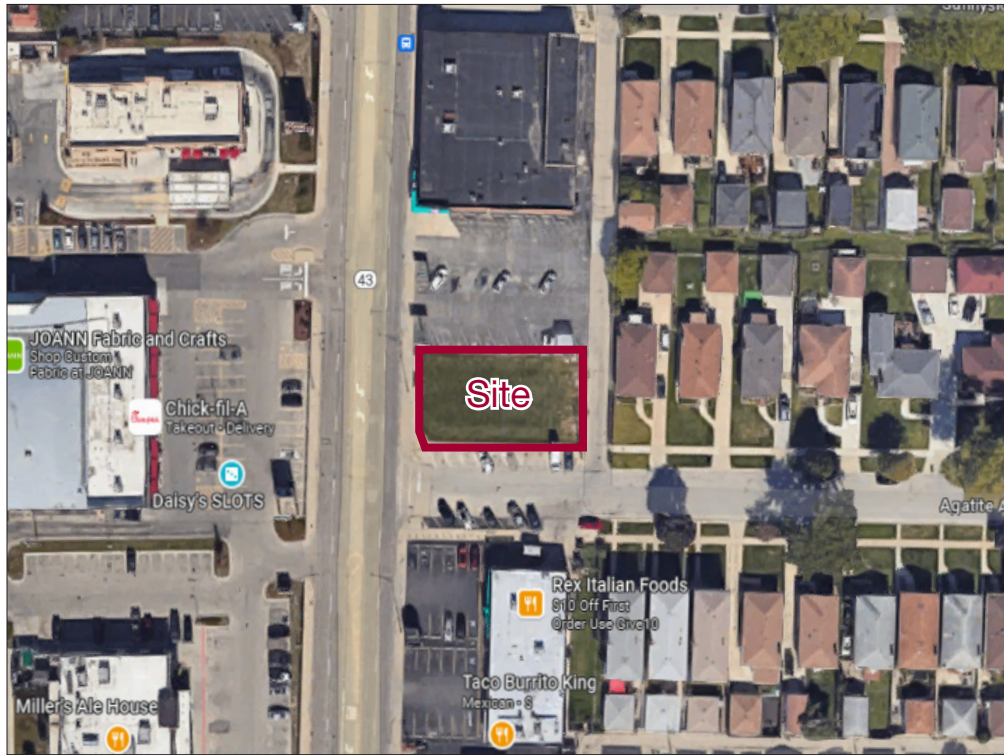


MILLENNIUM PROPERTIES R/E *For Sale: Land Lot on Prominent Corner at Harlem Ave.*

4435 N. Harlem Ave., Norridge, IL

Call For Pricing



Property Highlights

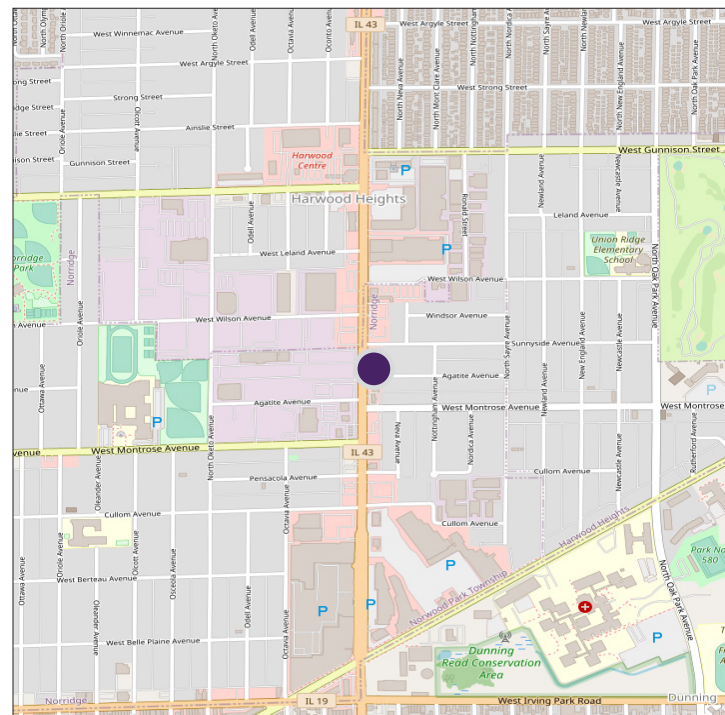
- 7,162 SF land parcel
- 58' of frontage on prominent corner of Harlem Ave and Agatite Ave
- All utilities available to site
- Close to public transportation
- Retailers in area include Harlem Irving Mall, Norridge Commons Mall, Nordstrom Rack, Kohl's, Joann, Hobby Lobby, Miller's Ale House, European Wax Center, Planet Fitness, and several restaurants and boutiques
- Traffic count: 29,945 vehicles daily
- Zoning: B-1
- Real estate taxes (2021): \$1,553

Property Overview

A 7,162 square foot (or 0.16 acre) corner land parcel in Norridge is available for sale. This land site is strategically situated at intersection of Harlem (IL Route 43) and Agatite Avenues. The site is located at the hard corner and provides substantial frontage on bustling Harlem Avenue. All utilities are available to site. Perfect for developing a variety of uses including retail, office, medical office, a restaurant, spa, gym and more. Excellent access to public and vehicular transportation Perfect opportunity for developer or investor.

This land parcel is situated in the vibrant Village of Norridge, in a mixed-use commercial corridor on Harlem Avenue. The property benefits from high visibility and high potential for a steady flow of visitors due to the proximity to residential developments.

| DEMOGRAPHICS | 1 Mile | 3 Mile | 5 Mile |
|---------------|----------|----------|----------|
| Population | 26,611 | 258,050 | 622,695 |
| Households | 10,168 | 94,829 | 216,189 |
| Median Income | \$81,420 | \$78,029 | \$77,390 |



Daniel J. Hyman
 President | Managing Broker
 (312) 338 - 3003
 dhyman@mpirealestate.com

mpirealestate.com

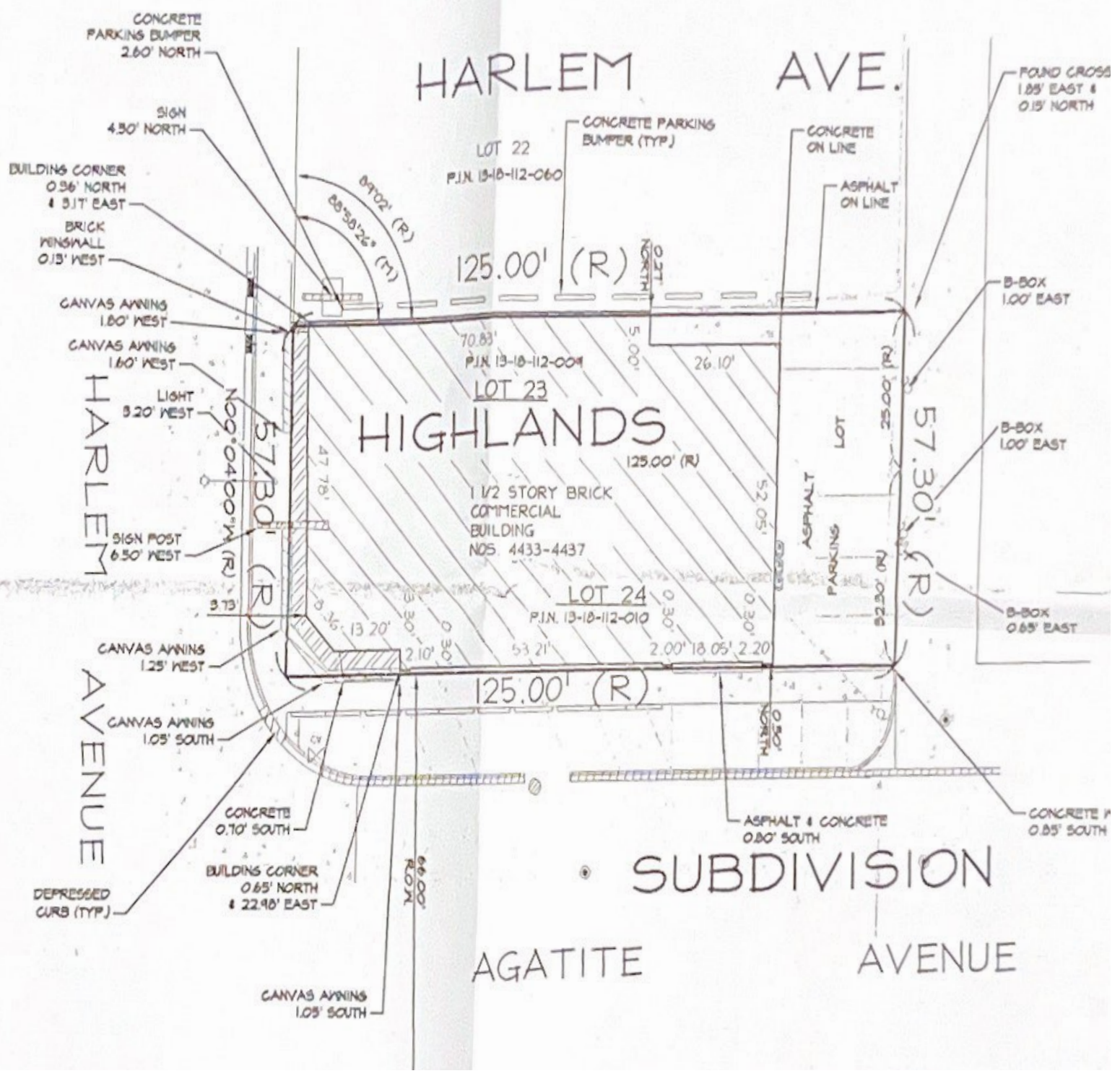
All information provided herein is from sources deemed reliable. No representation is made as to the accuracy thereof and it is submitted subject to errors, omissions, changes, prior sale or lease or withdrawal without notice. Projections, opinions, assumptions and estimates are presented as examples only and may not represent actual performance. Consult tax and legal advisors to perform your own investigation. No commission will be paid to a broker that is representing themselves, their company, another broker or representative of their company, or a member of the broker's family. An affidavit will be required to certify that the principal is not acting as a broker in any manner.

MILLENNIUM PROPERTIES R/E *For Sale: Land Lot on Prominent Corner at Harlem Ave.*

4435 N. Harlem Ave., Norridge, IL

Call For Pricing

Site Map



Daniel J. Hyman
 President | Managing Broker
 (312) 338 - 3003
 dhyman@mpirealestate.com

mpirealestate.com

All information provided herein is from sources deemed reliable. No representation is made as to the accuracy thereof and it is submitted subject to errors, omissions, changes, prior sale or lease or withdrawal without notice. Projections, opinions, assumptions and estimates are presented as examples only and may not represent actual performance. Consult tax and legal advisors to perform your own investigation. No commission will be paid to a broker that is representing themselves, their company, another broker or representative of their company, or a member of the broker's family. An affidavit will be required to certify that the principal is not acting as a broker in any manner.