



Retail Strip Center Available in Hanover Park

5650 - 5700 ARLINGTON DRIVE EAST • HANOVER PARK, ILLINOIS

Building Size:

12,500sf center built in 2006

Units:

Nine 1,380sf units with individually metered utilities

Land Size:

58,000sf

Parking:

70-80 spaces

Zoning Designation:

B-2: Local Business District

Occupancy:

22.22%

Potential NOI:

\$181,320 at 100% occupancy

Property Taxes:

\$23,992.82 ('08)

Asking Price:

\$1,800,000

For More Information, Contact:

Brad Thompson

Vice President

(312) 338-3012

bthompson@mpirealestate.com



Sees 3,350 vehicles per day
along Lake Street.



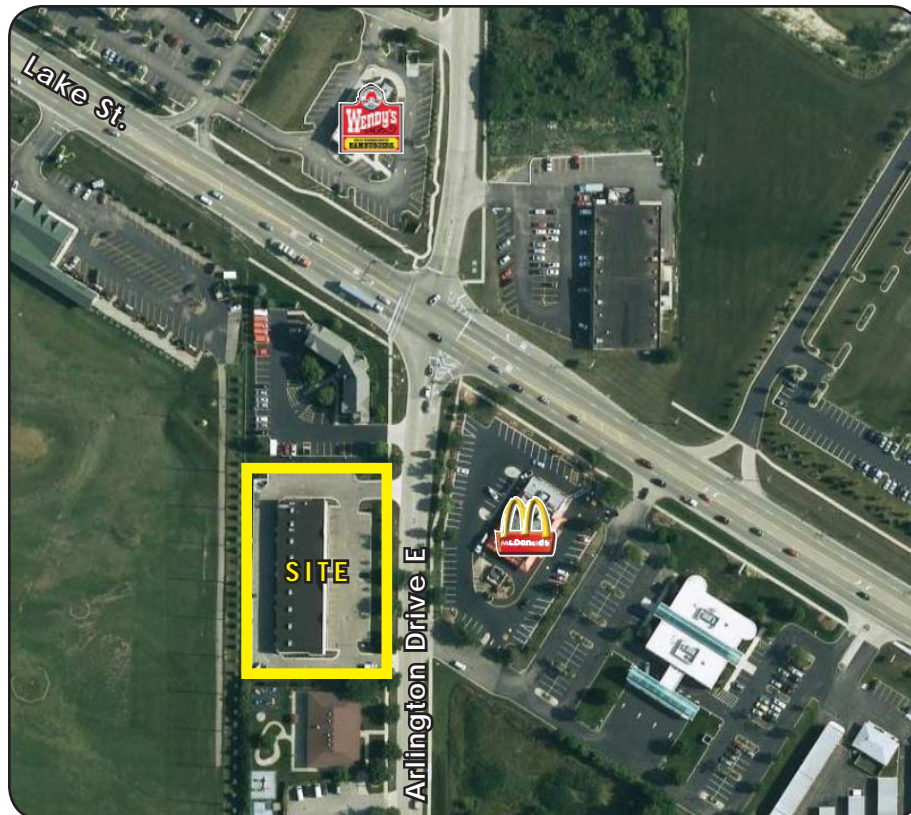
Disclaimer: Information contained herein has been obtained from the owner and other sources which appear reliable. However, Millennium Properties R/E, Inc. is acting as owner's agent and the agent listed above is the owner's designated agent, and makes no warranties or representations as to the accuracy or completeness of this information.



Retail Strip Center Available in Hanover Park

5650 - 5700 ARLINGTON DRIVE EAST • HANOVER PARK, ILLINOIS

aerial



demographics

Population	1 Mile	3 Mile	5 Mile
2008 Total Population	9,131	106,363	288,083
Pop Growth 2008-2013	1.92%	1.20%	-0.37%
Per Capita Income	\$28,195	\$30,303	\$30,815
Average Age	34	35.1	35.8
Households			
2008 Total Households	3,075	35,674	99,781
HH Growth 2008-2013	2.58%	2.01%	0.07%
Median Household Inc	\$75,910	\$77,177	\$75,570
Avg Household Size	2.97	2.97	2.87
Avg HH Vehicles	1.9	1.9	1.9
Avg Travel Time - Work	34 min	34 min	33 min
Housing			
Median Housing Value	\$218,727	\$255,027	\$259,388
Median Year Built	1979	1980	1980