

PRIME LOT AT BUSY INTERSECTION



Millennium Properties R/E, Inc.

**1809 Michigan City Rd.
Calumet City, Illinois**

Land Area:

75,406sf or 1.73 acres

Zoning:

R-1; single family homes

Real Estate Taxes:

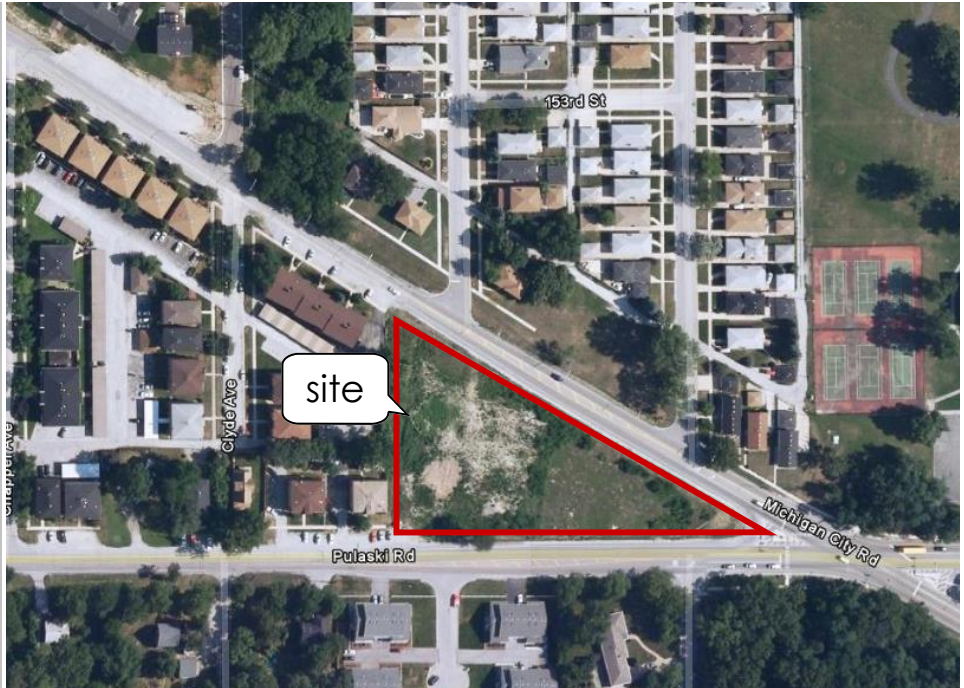
\$16,688.49 (2004)

Traffic Count:

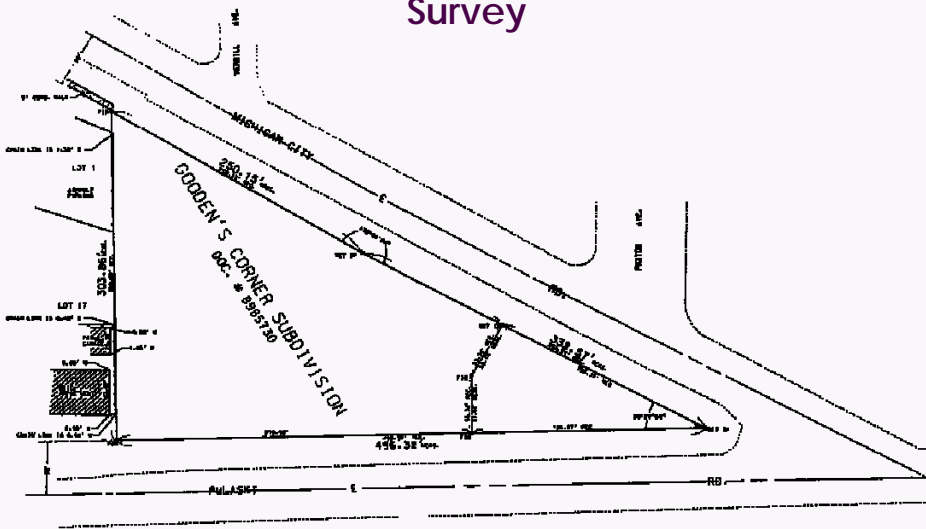
over 9,600 vehicles daily

Price:

available upon request



Survey



Demographics

	population	household income
1-mile	19,358	\$50,408
3-mile	107,513	\$47,284
5-mile	265,547	\$43,051

Millennium Properties R/E, Inc.
Two First National Plaza
20 South Clark Street • Suite 630
Chicago, Illinois 60603

Susan B. Silver
Executive Vice President
(312) 338-3001
ssilver@mpirealestate.com

Disclaimer: Information contained herein has been obtained from the owner and other sources deemed reliable; however, Millennium Properties R/E, Inc. is acting as the owner's agent and the agent listed above is the owner's designated agent, and makes no warranties or representations as to the accuracy or completeness of this information.