



Auto-Related Business & Real Estate Available for Sale

3020 W. IRVING PARK ROAD • CHICAGO, ILLINOIS

Building Size:

3,500sf

Lot Size:

5,850sf / 50' x 117'

Included in Sale:

2 Hydraulic Lifts, Tools, Brake Machine, License, Business Name & Phone Numbers

Zoning:

B3 - Commercial Residential

Parking:

Small lot in Rear

Real Estate Taxes:

\$12,410.23 ('06)

Price:

\$825,000

(building will be vacated upon closing)

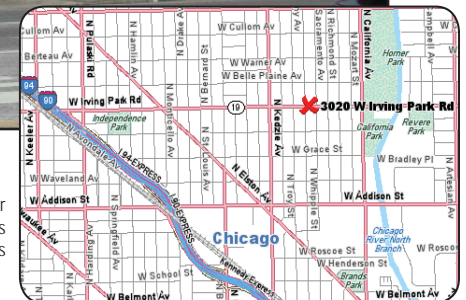
For More Information, Contact:

Brad Thompson

Associate

(312) 338-3012

bthompson@mpirealestate.com

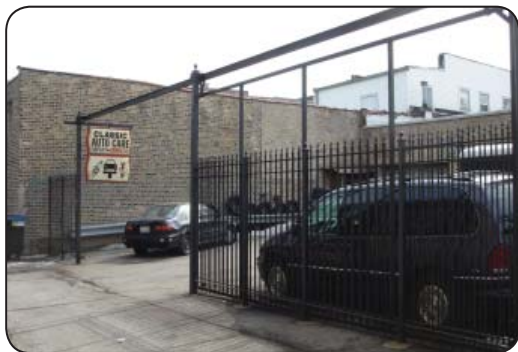
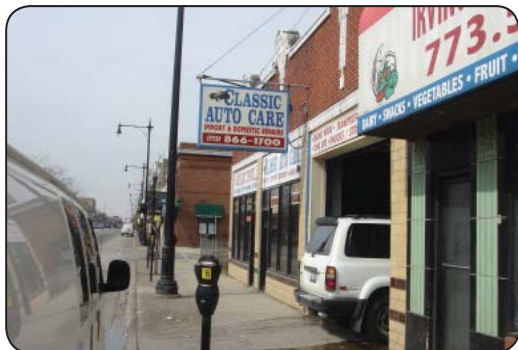


Disclaimer: Information contained herein has been obtained from the owner and other sources which appear reliable. However, Millennium Properties R/E, Inc. is acting as owner's agent and the agent listed above is the owner's designated agent, and makes no warranties or representations as to the accuracy or completeness of this information.



Auto-Related Business & Real Estate Available for Sale

3020 W. IRVING PARK ROAD • CHICAGO, ILLINOIS



Area Auto-Related Sales

Retail Sales Volume	1-mile	3-mile	5-mile
2006 Automobile Dealers	\$111,180,245	\$1,208,673,131	\$2,595,454,297
2006 Automotive Parts/Acc/Repair Stores	\$19,521,068	\$219,467,448	\$479,044,239
2006 Other Motor Vehicle Dealers	\$4,941,699	\$34,532,439	\$61,905,792
2006 Tire Dealers	\$4,367,872	\$48,262,512	\$106,148,411
2006 Gasoline Stations w/ Convenience Stores	\$55,360,679	\$590,669,652	\$1,256,726,885
2006 Other Gasoline Stations	\$43,034,029	\$454,870,700	\$969,180,173



For More Information, Contact:

Brad Thompson

Associate

(312) 338-3012

bthompson@mpirealestate.com